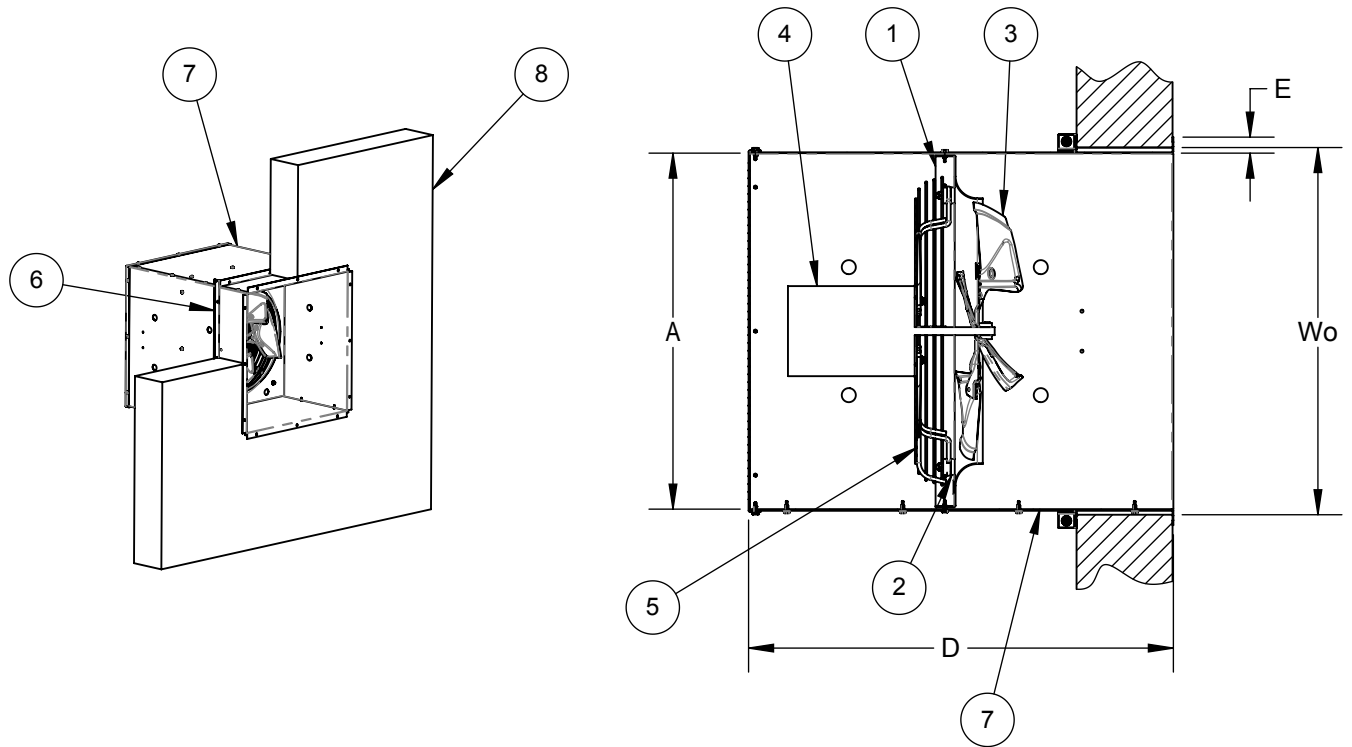


SWP WALL SLEEVE MODELS SWP08 THRU SWP20 (EXHAUST)



LEGEND

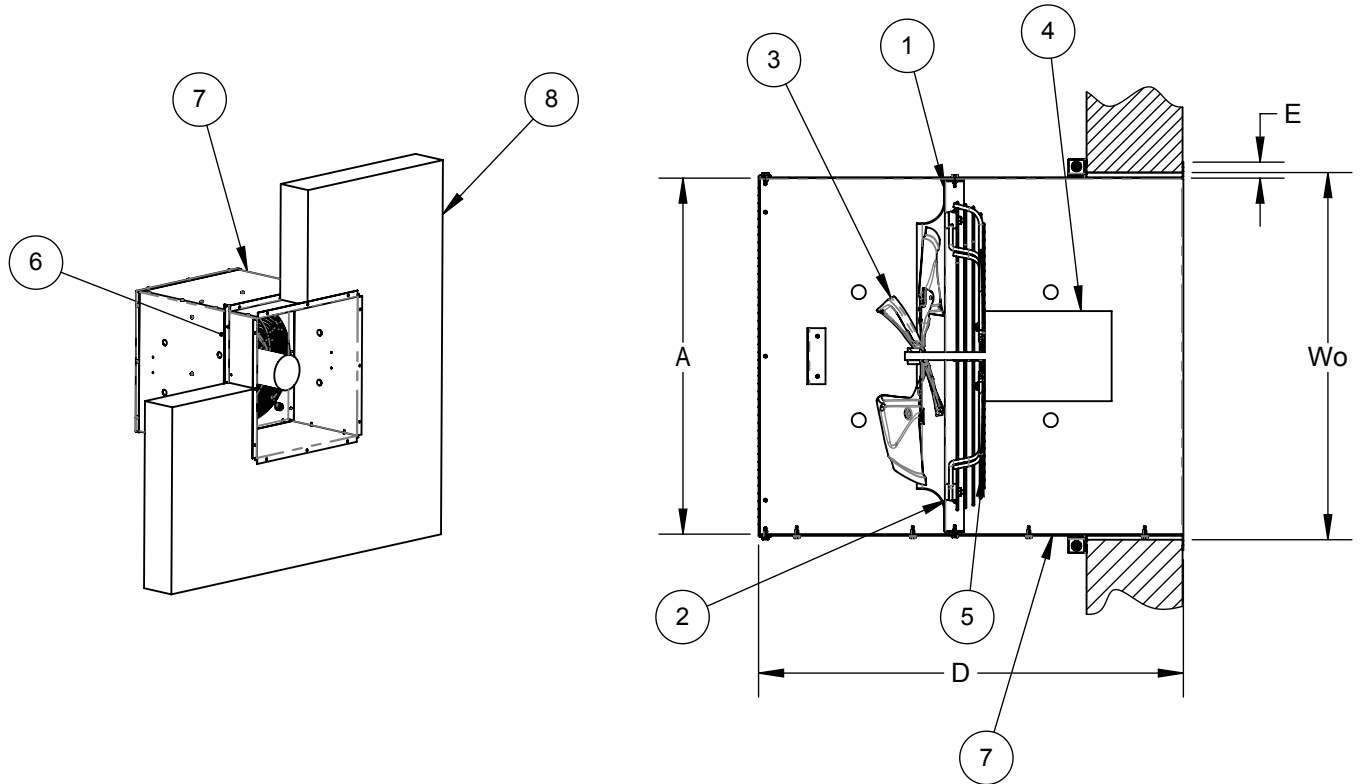
- | | |
|--|--|
| <ul style="list-style-type: none"> 1. POWDER COATED STEEL VENTURI PANEL 2. RIS VIBRATION MOUNTS AND HARDWARE 3. PROPELLER 4. MOTOR | <ul style="list-style-type: none"> 5. WIRE GUARD 6. PERIMETER ANGLE FRAME (ADJUSTABLE TO WALL THICKNESS) 7. GALVANIZED STEEL WALL SLEEVE 8. WALL (BY OTHERS) |
|--|--|

DIMENSIONAL DATA

MODEL	A ^{SQ}	D	D'	E	Wo ^{SQ}
SWP08	13.25	24.55	31.42	1.00	13.75
SWP10	15.25	24.43	31.92	1.00	15.75
SWP12	18.25	25.43	31.92	1.00	18.75
SWP14	20.25	26.42	32.92	1.00	20.75
SWP16	22.25	26.55	32.92	1.00	22.75
SWP18	24.25	28.80	34.80	1.00	24.75
SWP20	26.25	28.80	34.80	1.00	26.75

1. WHEN LOUVER ACTUATOR IS SELECTED USE D' DIMENSION.

**SWP WALL SLEEVE
 MODELS SWP08 THRU SWP20 (SUPPLY)**



LEGEND

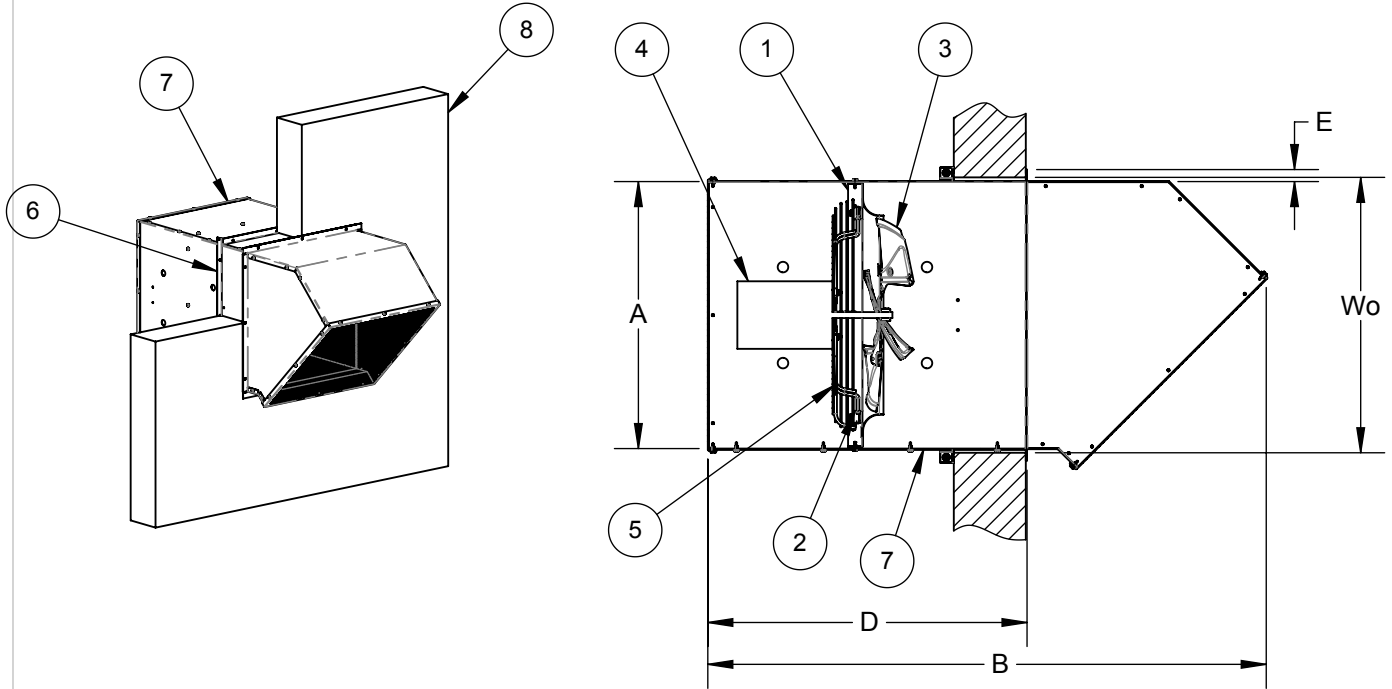
- 1. POWDER COATED STEEL VENTURI PANEL
- 2. RIS VIBRATION MOUNTS AND HARDWARE
- 3. PROPELLER
- 4. MOTOR
- 5. WIRE GUARD
- 6. PERIMETER ANGLE FRAME (ADJUSTABLE TO WALL THICKNESS)
- 7. GALVANIZED STEEL WALL SLEEVE
- 8. WALL (BY OTHERS)

DIMENSIONAL DATA

MODEL	A ^{SQ}	D	D'	E	Wo ^{SQ}
SWP08	13.25	24.55	31.42	1.00	13.75
SWP10	15.25	24.43	31.92	1.00	15.75
SWP12	18.25	25.43	31.92	1.00	18.75
SWP14	20.25	26.42	32.92	1.00	20.75
SWP16	22.25	26.55	32.92	1.00	22.75
SWP18	24.25	28.80	34.80	1.00	24.75
SWP20	26.25	28.80	34.80	1.00	26.75

1. WHEN LOUVER ACTUATOR IS SELECTED USE D' DIMENSION.

**SWP WALL SLEEVE W/45° WEATHER HOOD
 MODELS SWP08 THRU SWP20 (EXHAUST)**



LEGEND

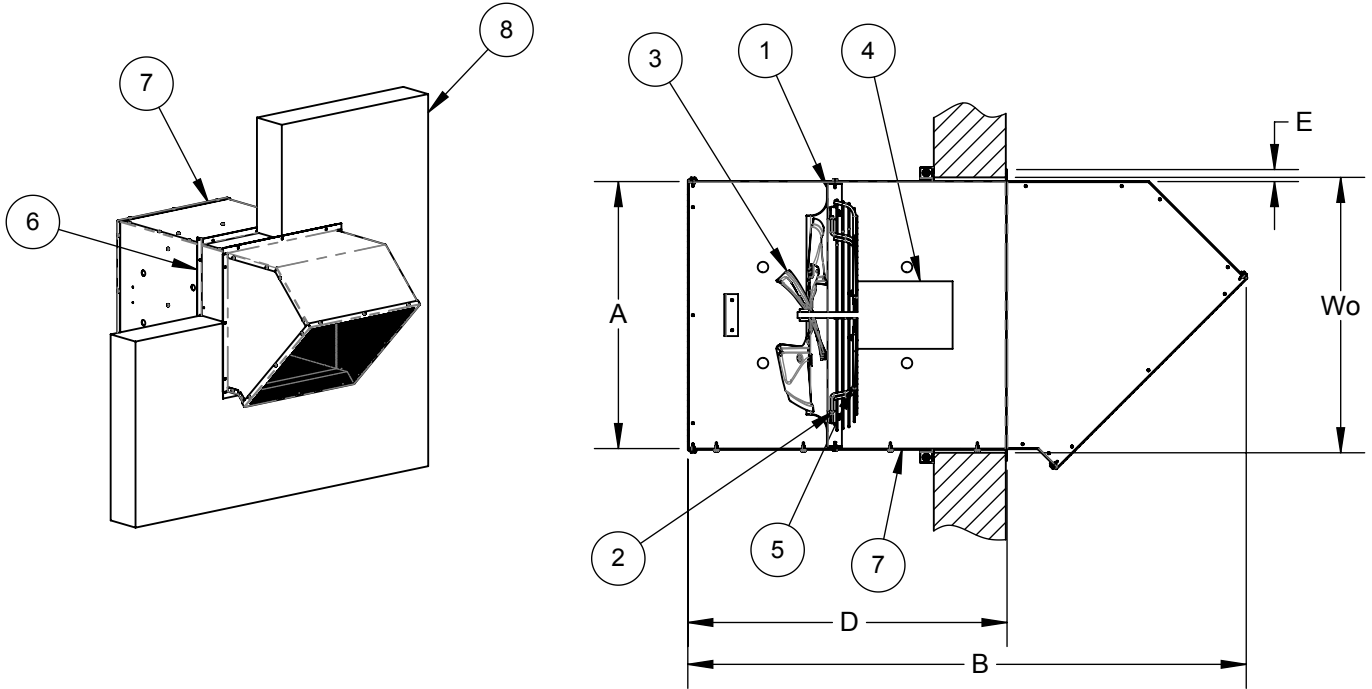
- 1. POWDER COATED STEEL VENTURI PANEL
- 2. RIS VIBRATION MOUNTS AND HARDWARE
- 3. PROPELLER
- 4. MOTOR
- 5. WIRE GUARD
- 6. PERIMETER ANGLE FRAME (ADJUSTABLE TO WALL THICKNESS)
- 7. GALVANIZED STEEL WALL SLEEVE
- 8. WALL (BY OTHERS)

DIMENSIONAL DATA

MODEL	A ^{sq}	B	B'	D	D'	E	Wo ^{sq}
SWP08	13.25	38.01	44.88	24.55	31.42	1.00	13.75
SWP10	15.25	39.51	47.00	24.43	31.92	1.00	15.75
SWP12	18.25	42.01	48.50	25.43	31.92	1.00	18.75
SWP14	20.25	38.45	44.95	26.42	32.92	1.00	20.75
SWP16	22.25	46.63	53.00	26.55	32.92	1.00	22.75
SWP18	24.25	51.00	57.00	28.80	34.80	1.00	24.75
SWP20	26.25	52.50	58.50	28.80	34.80	1.00	26.75

1. WHEN LOUVER ACTUATOR IS SELECTED USE D' AND B' DIMENSION.

**SWP WALL SLEEVE W/45° WEATHER HOOD
 MODELS SWP08 THRU SWP20 (SUPPLY)**



LEGEND

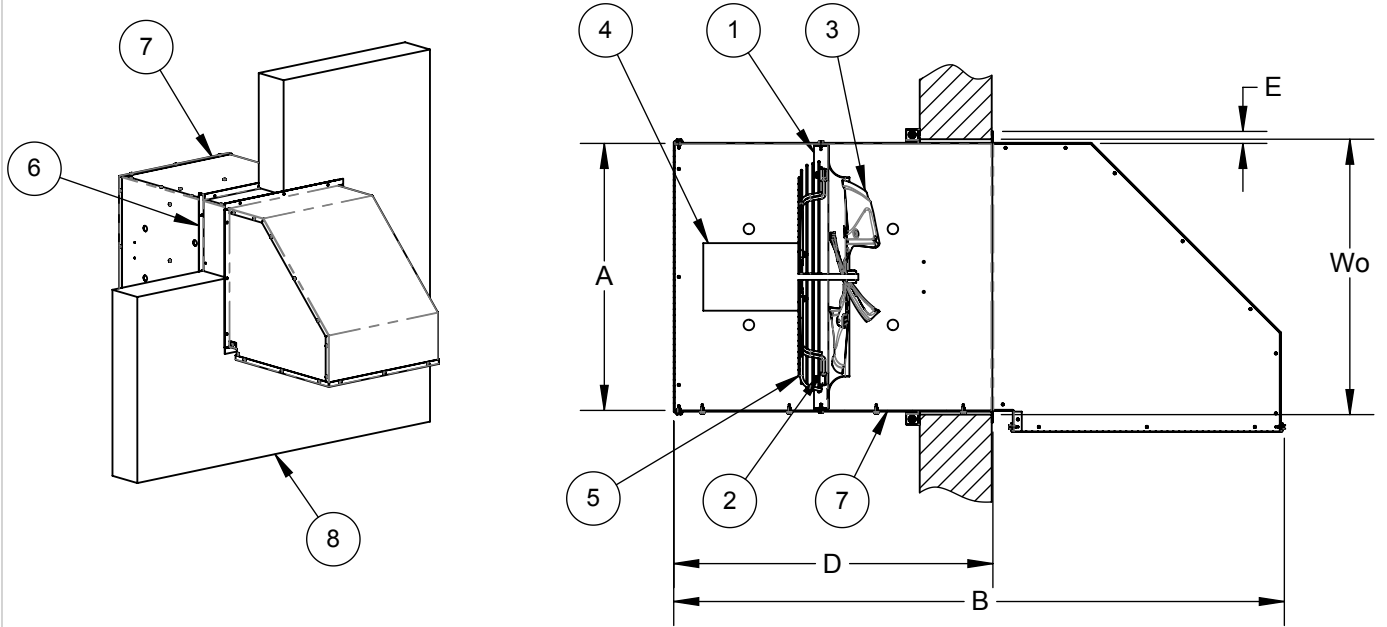
- 1. POWDER COATED STEEL VENTURI PANEL
- 2. RIS VIBRATION MOUNTS AND HARDWARE
- 3. PROPELLER
- 4. MOTOR
- 5. WIRE GUARD
- 6. PERIMETER ANGLE FRAME (ADJUSTABLE TO WALL THICKNESS)
- 7. GALVANIZED STEEL WALL SLEEVE
- 8. WALL (BY OTHERS)

DIMENSIONAL DATA

MODEL	A ^{SQ}	B	B'	D	D'	E	Wo ^{SQ}
SWP08	13.25	38.01	44.88	24.55	31.42	1.00	13.75
SWP10	15.25	39.51	47.00	24.43	31.92	1.00	15.75
SWP12	18.25	42.01	48.50	25.43	31.92	1.00	18.75
SWP14	20.25	38.45	44.95	26.42	32.92	1.00	20.75
SWP16	22.25	46.63	53.00	26.55	32.92	1.00	22.75
SWP18	24.25	51.00	57.00	28.80	34.80	1.00	24.75
SWP20	26.25	52.50	58.50	28.80	34.80	1.00	26.75

1. WHEN LOUVER ACTUATOR IS SELECTED USE D' AND B' DIMENSION.

**SWP WALL SLEEVE W/90° WEATHER HOOD
 MODELS SWP08 THRU SWP20 (EXHAUST)**



LEGEND

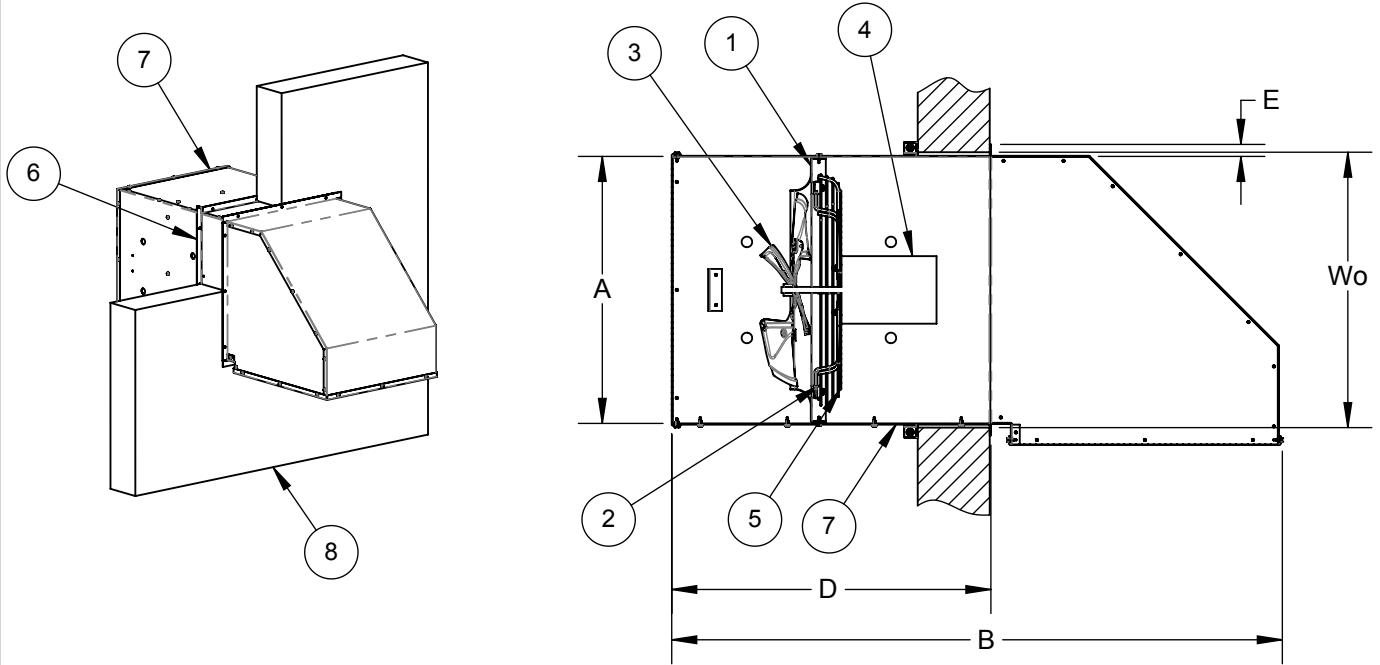
- 1. POWDER COATED STEEL VENTURI PANEL
- 2. RIS VIBRATION MOUNTS AND HARDWARE
- 3. PROPELLER
- 4. MOTOR
- 5. WIRE GUARD
- 6. PERIMETER ANGLE FRAME (ADJUSTABLE TO WALL THICKNESS)
- 7. GALVANIZED STEEL WALL SLEEVE
- 8. WALL (BY OTHERS)

DIMENSIONAL DATA

MODEL	A ^{SQ}	B	B'	D	D'	E	Wo ^{SQ}
SWP08	13.25	40.27	47.14	24.55	31.42	1.00	13.75
SWP10	15.25	42.28	49.77	24.43	31.92	1.00	15.75
SWP12	18.25	46.14	52.63	25.43	31.92	1.00	18.75
SWP14	20.25	49.27	55.77	26.42	32.92	1.00	20.75
SWP16	22.25	50.88	57.25	26.55	32.92	1.00	22.75
SWP18	24.25	55.63	61.63	28.80	34.80	1.00	24.75
SWP20	26.25	57.88	63.88	28.80	34.80	1.00	26.75

1. WHEN LOUVER ACTUATOR IS SELECTED USE D' AND B' DIMENSION.

**SWP WALL SLEEVE W/90° WEATHER HOOD
 MODELS SWP08 THRU SWP20 (SUPPLY)**



LEGEND

- 1. POWDER COATED STEEL VENTURI PANEL
- 2. RIS VIBRATION MOUNTS AND HARDWARE
- 3. PROPELLER
- 4. MOTOR
- 5. WIRE GUARD
- 6. PERIMETER ANGLE FRAME (ADJUSTABLE TO WALL THICKNESS)
- 7. GALVANIZED STEEL WALL SLEEVE
- 8. WALL (BY OTHERS)

DIMENSIONAL DATA

MODEL	A ^{SQ}	B	B'	D	D'	E	Wo ^{SQ}
SWP08	13.25	40.27	47.14	24.55	31.42	1.00	13.75
SWP10	15.25	42.28	49.77	24.43	31.92	1.00	15.75
SWP12	18.25	46.14	52.63	25.43	31.92	1.00	18.75
SWP14	20.25	49.27	55.77	26.42	32.92	1.00	20.75
SWP16	22.25	50.88	57.25	26.55	32.92	1.00	22.75
SWP18	24.25	55.63	61.63	28.80	34.80	1.00	24.75
SWP20	26.25	57.88	63.88	28.80	34.80	1.00	26.75

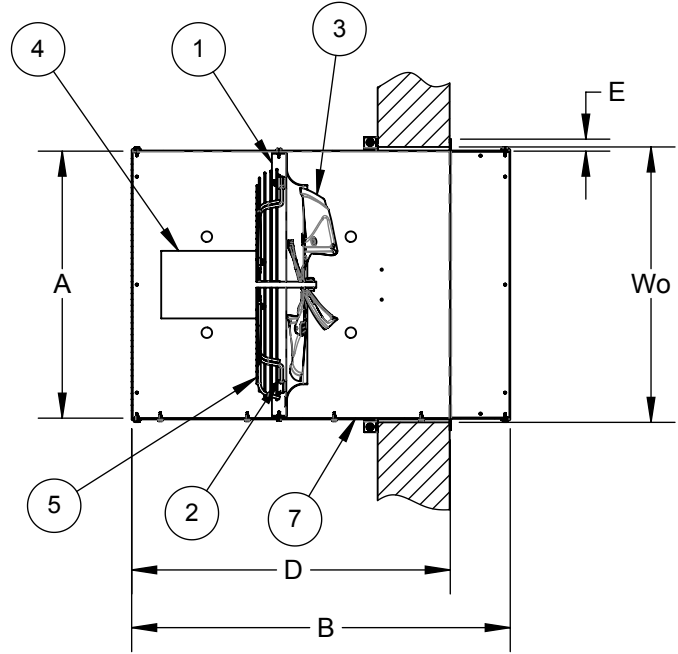
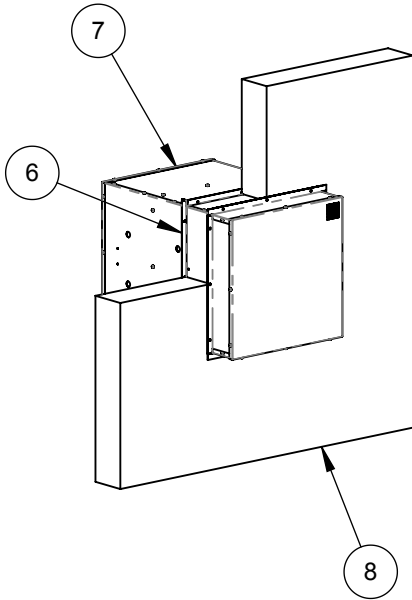
1. WHEN LOUVER ACTUATOR IS SELECTED USE D' AND B' DIMENSION.

REVISION:

FORM:

REPLACES:

**SWP WALL SLEEVE W/DAMPER GUARD
 MODELS SWP08 THRU SWP20 (EXHAUST)**



LEGEND

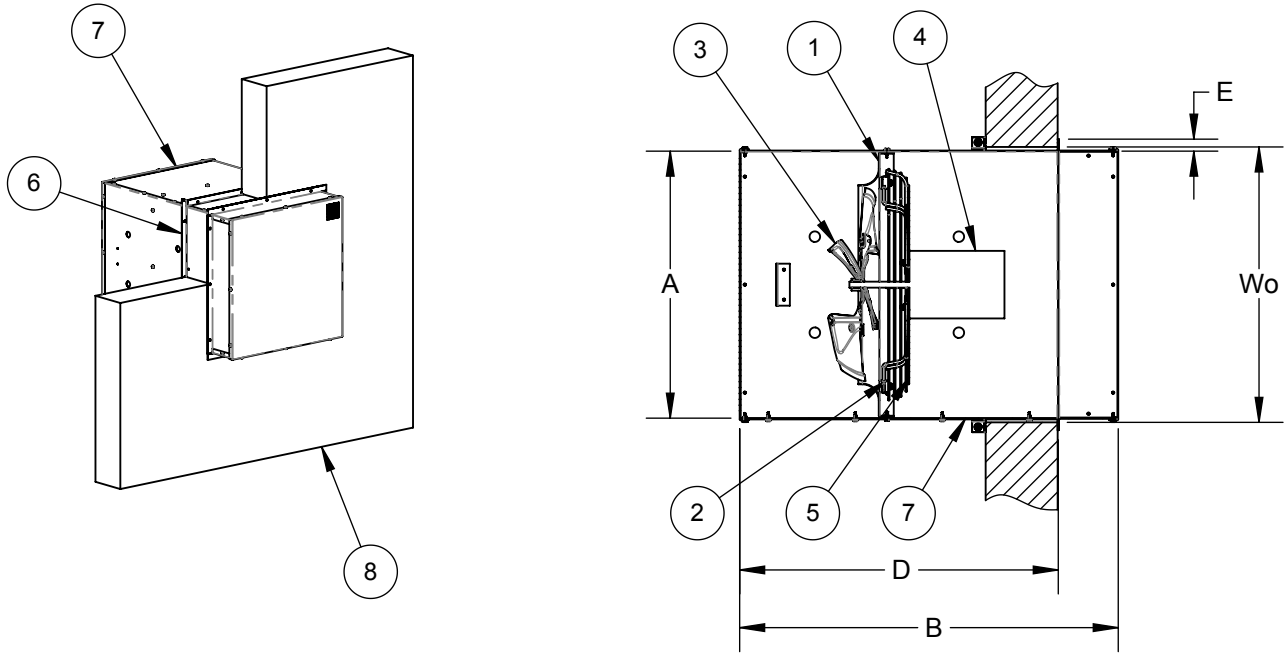
- | | |
|--------------------------------------|---|
| 1. POWDER COATED STEEL VENTURI PANEL | 6. PERIMETER ANGLE FRAME (ADJUSTABLE TO WALL THICKNESS) |
| 2. RIS VIBRATION MOUNTS AND HARDWARE | 7. GALVANIZED STEEL WALL SLEEVE |
| 3. PROPELLER | 8. WALL (BY OTHERS) |
| 4. MOTOR | |
| 5. WIRE GUARD | |

DIMENSIONAL DATA

MODEL	A ^{SQ}	B	B'	D	D'	E	Wo ^{SQ}
SWP08	13.25	29.94	36.81	24.55	31.42	1.00	13.75
SWP10	15.25	30.82	38.31	24.43	31.92	1.00	15.75
SWP12	18.25	46.14	52.63	25.43	31.92	1.00	18.75
SWP14	20.25	32.81	39.31	26.42	32.92	1.00	20.75
SWP16	22.25	31.39	37.76	26.55	32.92	1.00	22.75
SWP18	24.25	33.69	39.69	28.80	34.80	1.00	24.75
SWP20	26.25	35.19	41.19	28.80	34.80	1.00	26.75

1. WHEN LOUVER ACTUATOR IS SELECTED USE D' AND B' DIMENSION.

**SWP WALL SLEEVE W/DAMPER GUARD
 MODELS SWP08 THRU SWP20 (SUPPLY)**



LEGEND

- 1. POWDER COATED STEEL VENTURI PANEL
- 2. RIS VIBRATION MOUNTS AND HARDWARE
- 3. PROPELLER
- 4. MOTOR
- 5. WIRE GUARD
- 6. PERIMETER ANGLE FRAME (ADJUSTABLE TO WALL THICKNESS)
- 7. GALVANIZED STEEL WALL SLEEVE
- 8. WALL (BY OTHERS)

DIMENSIONAL DATA

MODEL	A ^{SQ}	B	B'	D	D'	E	Wo ^{SQ}
SWP08	13.25	29.94	36.81	24.55	31.42	1.00	13.75
SWP10	15.25	30.82	38.31	24.43	31.92	1.00	15.75
SWP12	18.25	46.14	52.63	25.43	31.92	1.00	18.75
SWP14	20.25	32.81	39.31	26.42	32.92	1.00	20.75
SWP16	22.25	31.39	37.76	26.55	32.92	1.00	22.75
SWP18	24.25	33.69	39.69	28.80	34.80	1.00	24.75
SWP20	26.25	35.19	41.19	28.80	34.80	1.00	26.75

1. WHEN LOUVER ACTUATOR IS SELECTED USE D' AND B' DIMENSION.